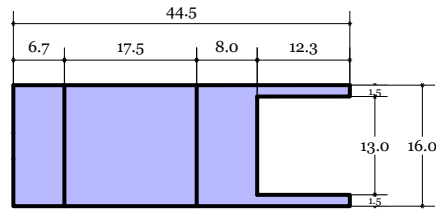
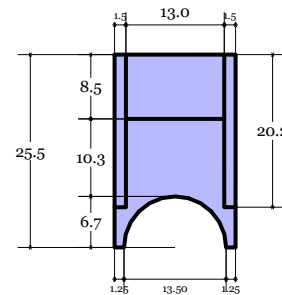


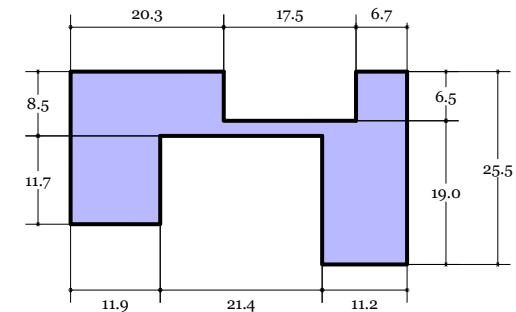
TOP



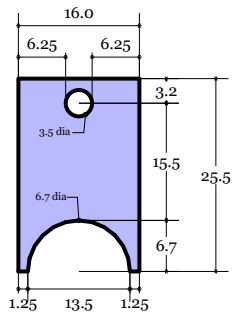
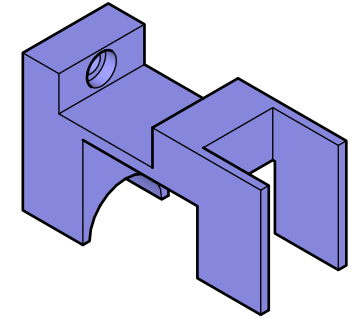
RIGHT



BACK

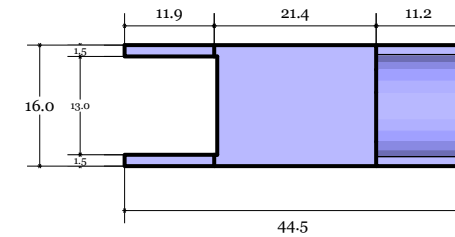
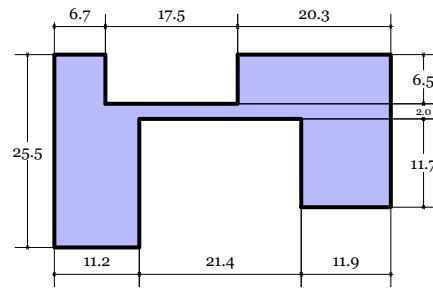


ISO



LEFT

FRONT



BOTTOM

## \*Notes:

The item should be 3D printed with black PLA and best done using Ultimaker 3 Extended

For extrusion type 3D printers, the recommended layer height is 0.1mm.

To check validity of the 3d printed output, the cuvette holder should fit as per the assembly instructions at the CN0503 user guide.

## Reference Links:

CN0503 User Guide: <https://wiki.analog.com/resources/eval/user-guides/circuits-from-the-lab/cn0503>

Assembly Guide Video: [https://www.youtube.com/watch?v=E\\_8bHC4Af2E](https://www.youtube.com/watch?v=E_8bHC4Af2E)

3D Printed Cuvette Cover  
for EVAL-CN0503-ARDZ  
Scale: 1:1  
Dimension unit: millimeters  
Tolerance: 0.2mm

MECH-CUVETTECOVER-3DP

Designer: Angelo Nikko Catapang

## REVISIONS

	MM/DD/YY	REMARKS
1	05/13/2020	Initial version
2	--/--/--	...
3	--/--/--	...
4	--/--/--	...
5	--/--/--	...

01

A